

BTL12-80 (12V / 80Ah)

BTL series is a general-purpose battery with 10 years design life in float service. With updated AGM valve regulated technology and high purity raw materials, the BTL series battery maintains high consistency for better performance and reliable standby service life. It is suitable for UPS, DC-power systems, emergency light and security system applications.



Specifications		
Nominal Voltage		12V
Nominal Capacity		80.0Ah
Dimensions	Length	350 ± 2mm
	Width	167 ± 2mm
	Height	182 ± 2mm
	Total height (with terminal)	182 ± 2mm
Approx. Weight		24.0kg
Terminals		F11, M6 screw terminals
Container Material		Acrylnitril-Butadien-Styrol (ABS)
Permitted installation position		Max. 90° to upright normal position (see picture above right)
Rated Capacity	84.6Ah	20h discharge, 1.80V / cell, 25°C
	80.0Ah	10h discharge, 1.80V / cell, 25°C
	71.5Ah	5h discharge, 1.75V / cell, 25°C
	62.1Ah	3h discharge, 1.75V / cell, 25°C
Max. Discharge Current		800A (5s)
Internal Resistance		Approx. 5,5mΩ
Operating temperature range	Discharge	-20 ~ 60°C
	Charge	0 ~ 50°C
	Storage (charged)	-20 ~ 60°C
Recommended operating temperature		Approx. 20°C
Max. charging current		24A
Charging voltage	Boost charge	Voltage 14.4 V ~ 15.0V @ 25°C Temperature coefficient -30mV/°C
	Float charging	Voltage 13.5V ~ 13.8V @ 25°C Temperature coefficient -20 mV/°C
Capacity affected by temperature	40°C	104%
	25°C	100%
	0°C	83%
Self-discharge		EFFEKTA BTL series batteries should be recharged at least every 6 months when stored at 25°C. At higher temperatures, the time interval is shortened.

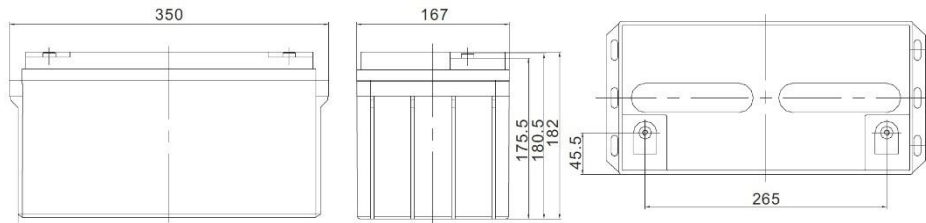
Discharge at constant current (ampere) at 25°C											
F.V/time	10min	15min	30min	1h	2h	3h	4h	5h	8h	10h	20h
1.85V/cell	144.5	111.9	67.73	41.21	25.70	19.13	15.68	13.36	9.06	7.75	4.04
1.80V/cell	160.3	122.6	73.06	43.91	27.01	20.02	16.36	13.89	9.37	8.00	4.15
1.75V/cell	173.0	131.0	77.24	46.01	28.02	20.69	16.87	14.30	9.61	8.20	4.23
1.70V/cell	183.0	137.6	80.46	47.61	28.79	21.21	17.26	14.60	9.79	8.34	4.29
1.65V/cell	190.7	142.7	82.92	48.83	29.37	21.60	17.56	14.83	9.93	8.45	4.34
1.60V/cell	196.5	146.5	84.78	49.75	29.81	21.89	17.78	15.01	10.03	8.53	4.37

Discharge at constant power (watts / cell) at 25°C											
F.V/time	10min	15min	30min	1h	2h	3h	4h	5h	8h	10h	20h
1.85V/cell	272.7	213.4	131.3	80.66	50.71	37.89	31.14	26.60	18.16	15.57	8.12
1.80V/cell	297.4	230.5	140.3	85.34	53.02	39.46	32.35	27.56	18.74	16.05	8.33
1.75V/cell	315.5	243.0	146.8	88.99	54.72	40.64	33.25	28.27	19.17	16.42	8.49
1.70V/cell	327.7	251.5	151.4	91.63	55.96	41.47	33.89	28.78	19.50	16.68	8.60
1.65V/cell	337.7	258.5	155.1	93.65	56.91	42.12	34.39	29.17	19.74	16.89	8.69
1.60V/cell	339.1	260.0	156.3	94.42	57.34	42.43	34.64	29.36	19.88	17.01	8.74

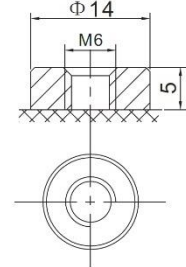
Dimensions

Unit: mm

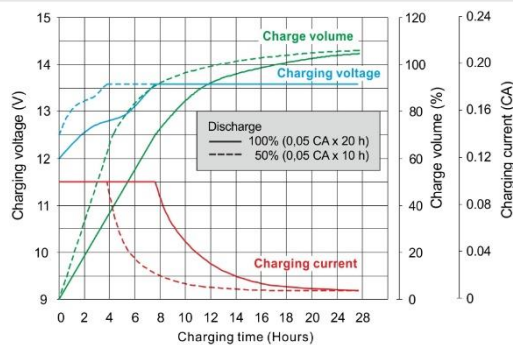
Dimensions: 350 (L) × 167 (W) × 182 (H)



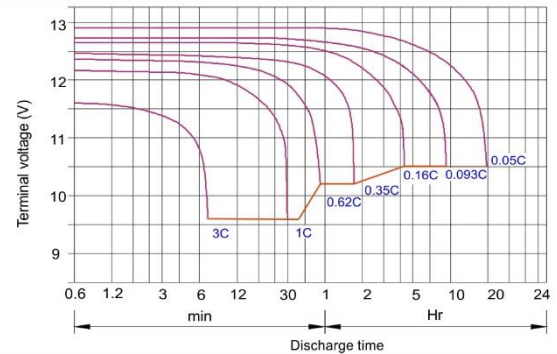
Terminal F11



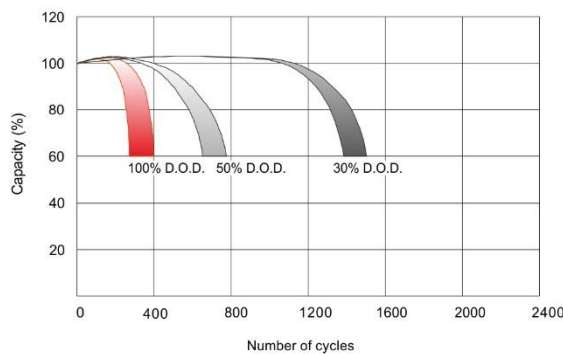
Float charging characteristics



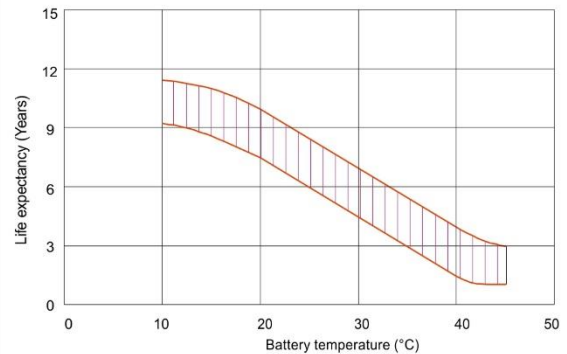
Discharge characteristics



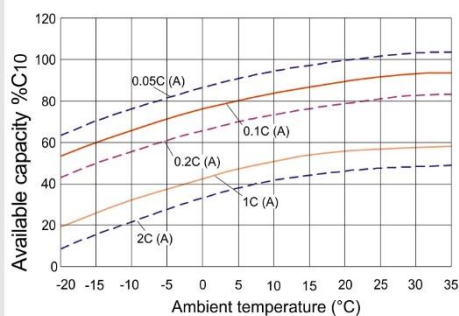
Charging cycle number in relation to discharge depth



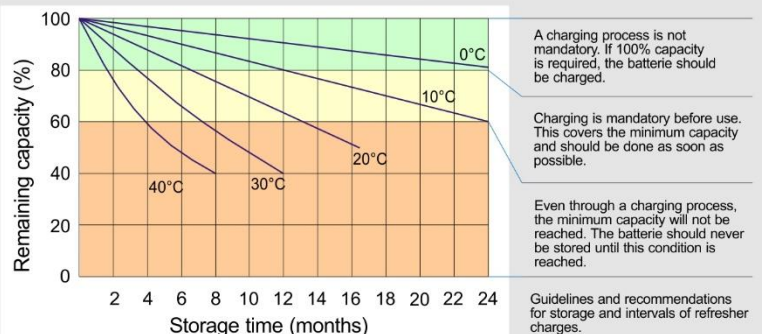
Temperature effect on the life expectancy



Effect of temperature on the capacity



Storage / self-discharge characteristics



EFFEKTA Regeltechnik GmbH
Rheinwaldstr. 34
D-78628 Rottweil
Germany

Tel.: +49 (0)741/17451-0
Fax: +49 (0)741/17451-22
Email: info@effekta.com
URL: www.effekta.com